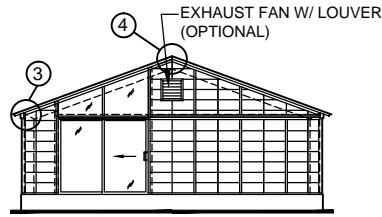
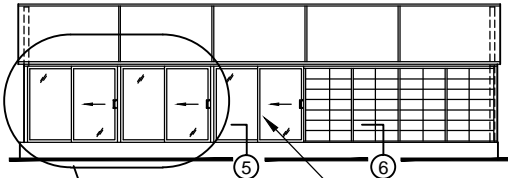


VARIES W/ BEAM SIZE
ROOF PLAN
(305mm X 610mm)
12" X 24"
NOMINAL GRID

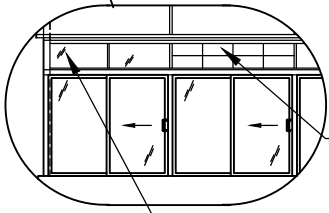


END WALL



SIDE WALL

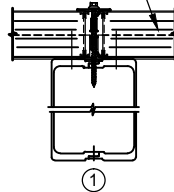
SLIDING GLASS DOOR
UNIT W/SCREEN, 5/8" THK.
CLEAR, INSULATED & TEMPERED
GLASS



5/8" THK. FIXED GLASS AT TRANSOM
(1" THK. FIXED GLASS OPTIONAL)

2 3/4" THERMALLY BROKEN INSULATED &
LIGHT TRANSMITTING
PANELS

(70mm)
2 3/4" THERMALLY BROKEN
INSULATED & LIGHT
TRANSMITTING
PANELS



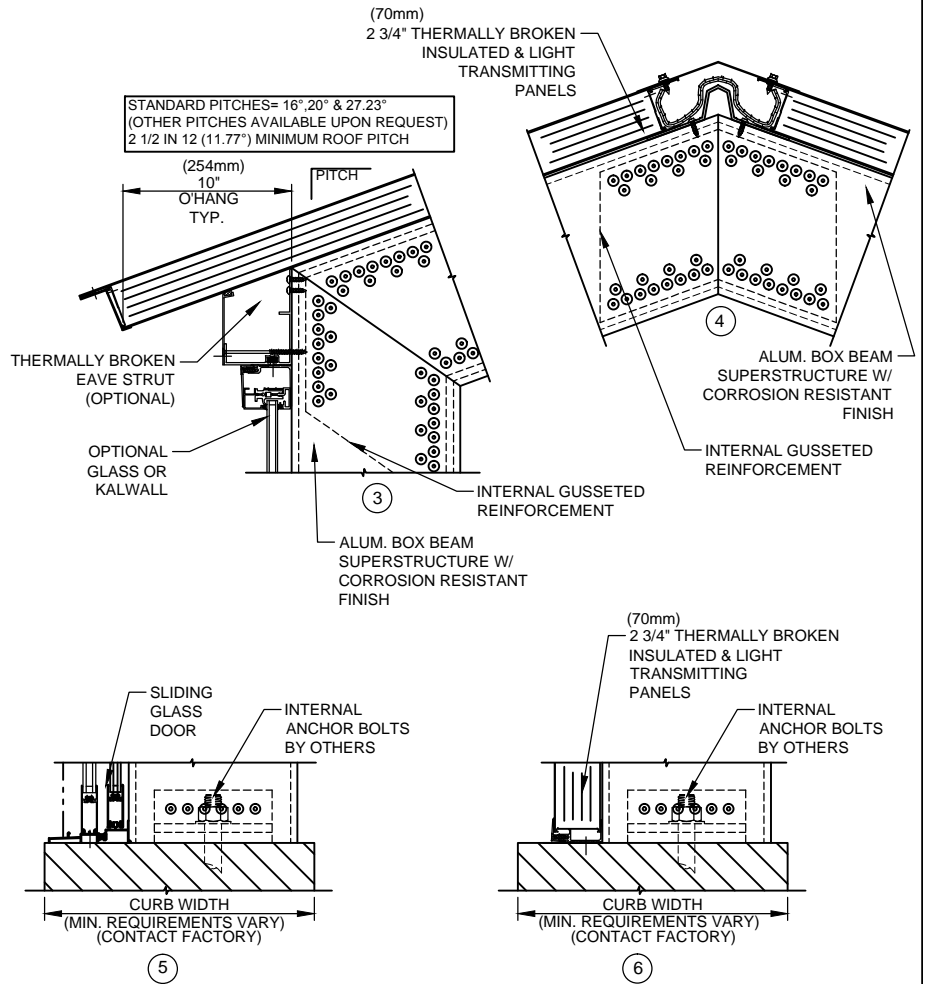
①

OVERLAP
JOINT

(70mm)
2 3/4" THERMALLY BROKEN
INSULATED & LIGHT
TRANSMITTING
PANELS



②



CENTER RIDGE ENCLOSURE

StructuresUnlimited

ENGINEERING DAYLIGHT