

# StructuresUnlimited

ENGINEERING DAYLIGHT



**Industrial & Removable Daylighting Systems**

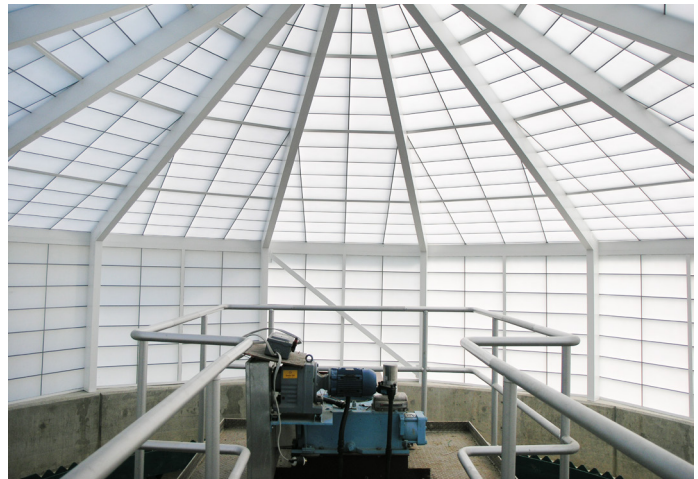
800 225 3895 | [StructuresUnlimitedInc.com](http://StructuresUnlimitedInc.com) | +1 603 645 6539





## Translucent Building Enclosures

- A truly pre-engineered building system
- Perfect for new construction & renovations
- Ideal for retrofits on existing tanks
- Clearspans™ of over 100' (30 meters)
- Condensation & corrosion resistance
- Panels & superstructure are resistant to chemicals and harsh environments
- Proven track record over 45 years



- Single source responsibility
- Factory installation available
- Structural aluminum system
- Systems are OSHA Fall through compliant
- Low maintenance requirements
- May be installed on existing tank walls
- Natural, glare-free diffused daylighting
- Thermal performance up to 0.05 U (R-20)
- Solar heat gain coefficients as low as 0.04



## Removable Systems

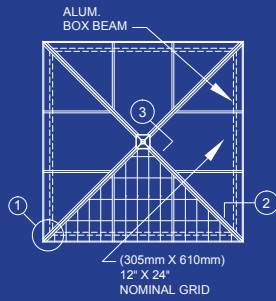
- Shed, ridge, pyramid, circular skylights
- Ideal for equipment access and swaps
- Truly removable as a single structural unit
- Cost effective even for occasional access
- Permanent lifting eye bolts for ease of use
- Fully engineered from the factory
- Inquire about custom configurations
- 100% made in the USA



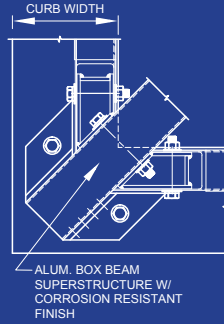


## REMOVABLE PYRAMID

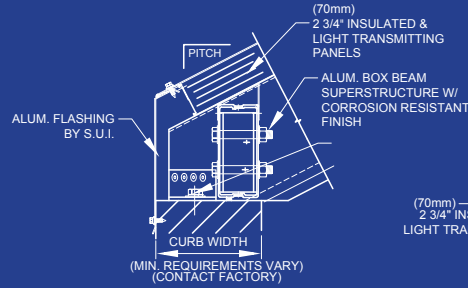
### ROOF PLAN



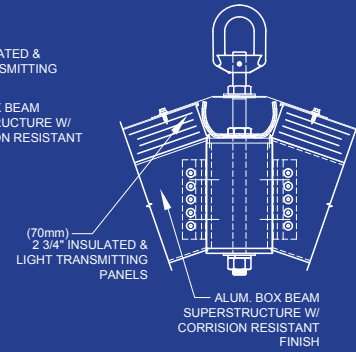
STANDARD PITCHES= 16°, 20° & 27.23°  
(OTHER PITCHES AVAILABLE UPON REQUEST)  
3 IN 12 (14.04°) MINIMUM ROOF PITCH



① CORNER CONNECTION  
PLAN DETAIL



② BASE CONNECTION  
SECTION DETAIL



③ PEAK CONNECTION  
SECTION DETAIL

### Performance Data: 2-3/4" (70mm) Panel

| FRP Face Sheet Combinations |              | Visible Light Transmission (VLT) % by NFRC 202 |               |               |               |        | Solar Heat Gain Coefficient @ 0° by NFRC 201 |               |               |               |        |
|-----------------------------|--------------|--|---------------|---------------|---------------|--------|--|---------------|---------------|---------------|--------|
| Exterior FRP                | Interior FRP | 0.53 U   | 0.29   0.23 U | 0.22   0.14 U | 0.18   0.10 U | 0.05 U | 0.53 U                                       | 0.29   0.23 U | 0.22   0.14 U | 0.18   0.10 U | 0.05 U |
| Crystal                     | White        | 37%  | 26%           | 13%           | 7%            | 20%    | 0.33   | 0.31          | 0.18          | 0.14          | 0.27   |
| White                       | White        | 23%  | 16%           | 9%            | 4%            | 14%    | 0.26   | 0.25          | 0.16          | 0.11          | 0.20   |
| Crystal                     | Crystal      | 58%  | 35%           | 14%           | 9%            | N/A    | 0.55   | 0.36          | 0.20          | 0.14          | N/A    |

### Performance Data: 4" (100mm) Panel

| FRP Face Sheet Combinations |              | Visible Light Transmission (VLT) % by NFRC 202 |        |        |        | Solar Heat Gain Coefficient @ 0° by NFRC 201 |        |        |        |
|-----------------------------|--------------|--|--------|--------|--------|--|--------|--------|--------|
| Exterior FRP                | Interior FRP | 0.55 U   | 0.15 U | 0.08 U | 0.05 U | 0.55 U                                       | 0.15 U | 0.08 U | 0.05 U |
| Crystal                     | White        | 37%  | 13%    | 5%     | N/A    | 0.52   | 0.09   | 0.04   | N/A    |
| White                       | White        | 23%  | 11%    | 4%+    | N/A    | 0.38   | 0.06   | 0.04*  | N/A    |
| Crystal                     | Crystal      | 58%  | 17%    | 6%     | N/A    | 0.65   | 0.11   | 0.07   | N/A    |

U-value SI conversion: 1.0 W/m²K = 0.176 Btu/hr/ft²/°F

 = Air Gap Only  = Fiberglass 'Batts'  = Lumira® Aerogel

U-values shown in bold denote thermally-broken grid core panels.

Visible light transmission (VLT) - NFRC 202 as noted. VLT percentages over 30% are not recommended for most Kalwall applications.

Panel U-values include panel grid-core by NFRC 100 or 102. NFRC certified system U-values vary depending on framing. Project-specific Information available by request.

Shading Coefficient (SC) is equal to 1.15 times the Solar Heat Gain Coefficient (SHGC). \*By calculation only (not by NFRC 201). By calculation only (not by NFRC 202)



Structures Unlimited, Inc. is continually engaged in research to improve our products. Therefore, the material in this brochure is descriptive in nature and does not constitute a warranty, either express or implied. Please contact us for a copy of the warranty that is given with the sale of our products.

Cleerspan is a trademark of Structures Unlimited, Inc. Kalwall is a registered trademark of Kalwall Corporation.

10 | 22 | 2019 ©2019 Structures Unlimited, Inc. Lumira is a registered trademark of Cabot Corporation.

